



MONTHLY MEMBERSHIP PROGRESS REPORT

District 202 F

Results as of: 04/30/2018

GMT: CLIFFORD HEYWOOD

LOCATION NEW ZEALAND

GMT CA

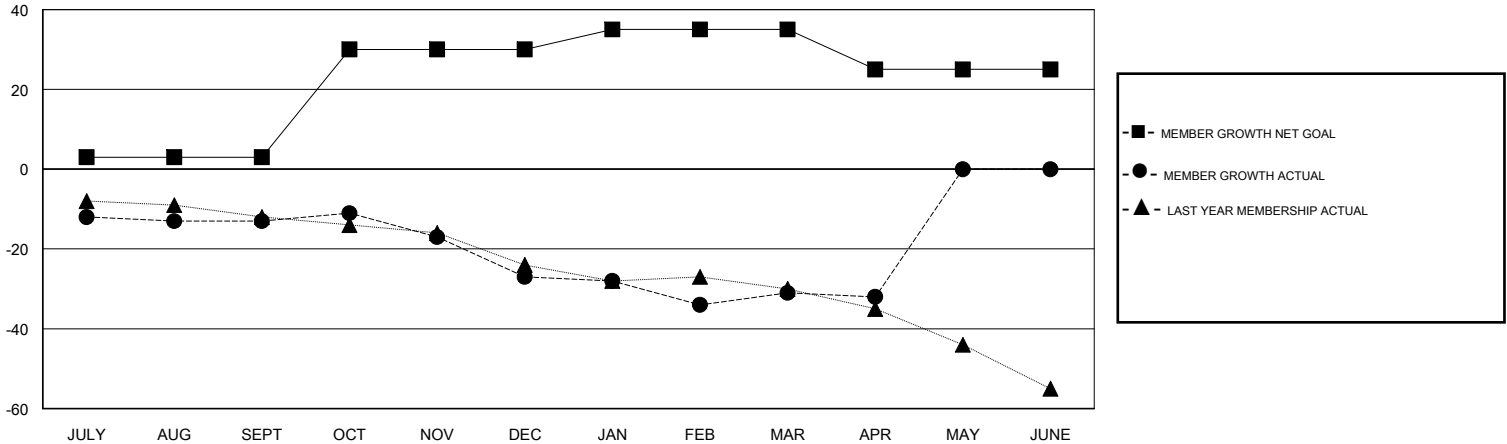
Clubs			
RESULTS FOR 2017-2018			
QUARTER	NEW CLUB GOAL	NEW CLUBS	DROPPED CLUBS
JULY/AUG/SEPT	0	0	0
OCT/NOV/DEC	1	0	0
JAN/FEB/MAR	0	0	1
APR/MAY/JUNE	0	0	0

Members			
RESULTS FOR 2017-2018			
QUARTER	MEMBER GROWTH NET GOAL	MEMBER GROWTH ACTUAL	DROPPED MEMBERS ACTUAL (including transfers)
JULY/AUG/SEPT	3	27	34
OCT/NOV/DEC	27	32	36
JAN/FEB/MAR	5	13	15
APR/MAY/JUNE	-10	5	6

GOALS AND ACTUAL NEW CLUBS CUMULATIVE



GOALS AND ACTUAL MEMBERS CUMULATIVE



DROPPED CLUBS: 1

29 CLUBS OF 48 ADDED 1 OR MORE NEW MEMBERS

GENDER DISTRIBUTION	
MALE	918 (65.76%)
FEMALE	478 (34.24%)
Women Percentage Fiscal Year Goal: 38%	

DROPPED MEMBERS	
DECEASED	10
CLUB CANCELLED	0
OTHER	81
TOTAL	91

[CLICK HERE FOR CUMULATIVE MEMBERSHIP DATA](#)

TOTAL FAMILY UNIT MEMBERS	59
FAMILY MEMBERS PAYING HALF DUES	30